



- 2 Optional relays
- 2 SPDT relays
- Alarming
- Explosion proof available

Cap-Level[®] II is an excellent choice for level monitoring and control. The "industry standard" 4-20mA output is provided with a selectable dampening function to stabilize readings where severe agitation is present. Simple zero and span adjustment make calibration easy.

The relay logic circuitry offers the flexibility to control multiple pumps, conveyors and alarms. Each relay can be set to turn your equipment on and off at any selected point on the probe - without any external latching devices. Failsafe selection gives the security of fault indication and/or conveyor stop if power is lost.

The probe configurations and materials offered allow you to custom fit Cap-Level[®] II to your application. Designs such as the type "E" and type "H" tie-down, allow use in tall silos and include a unique cable adjustments.

Features and Benefits

Continuous 4-20mA
Industry standard output

Output Dampening - Standard
Stabilizes readings where severe agitation is present

Teflon[®], PVC, and 316 S.S. Probes and NPT or Flange Mounting
Provides more options for a wide range of applications

Continuous Process Management
Uninterrupted level measurement

How to Order

CL - - - - - 30

Design Level
(Assigned By Factory)

Probe Length (See Notes 1 & 2)
(Specify In Inches)

Probe Type
A = 316 S.S. Solid Probe (See Note 3)
B = Teflon[®] Jacketed Solid Probe
D = Bare S.S. Cable, S.S. Weight (See Note 3)
E = Bare S.S. Cable, Tie Down Assy. (See Note 3)
H = Teflon[®] Jacketed Cable, Tie Down Assy.
I = Teflon[®] Jacketed Cable, Teflon Jacketed Weight
M = PVC Jacketed Solid Probe
N = Teflon[®] Jacketed Solid With 1" Sanitary Mount
P = 316 S.S. Solid with 1" Sanitary Mount (See Note 3)
Q = Teflon Jacketed Solid Probe With 2" Sanitary Mount

Voltage
1 = 120 VAC
2 = 240 VAC

Enclosure
G = General Purpose - NEMA 4X
X = Explosion-proof - NEMA 7/9 (See Note 4)

Series
3 = Continuous With No Relays
4 = Continuous With 1 Relay
5 = Continuous With 2 Relays

Cap-Level

Note 1: Maximum standard length for solid probes is 167" (4242mm). For probes exceeding this length contact factory.

Note 2: Maximum standard length for cable probes is 1200" (30480mm). For probes exceeding this length contact factory.

Note 3: For dry or non-conductive materials only.

Note 4: For use with Type "B" probe only.

Probe Specifications

Supply Voltage:	120 VAC, 240 VAC 50/60 Hz
Power Consumption:	8 watts
Analog Output:	4-20mA into 400 ohms maximum
Relay(s) Output:	SPDT, 3 amps @ 120 VAC
Operating Temperatures:	-40° F to +160° F (-40° C to +71° C)
Calibration:	Analog - coarse and fine zero/span, non-interacting. Relays - hi, low setpoints and hysteresis set as percentage of span
Relay Deadband (Hysteresis):	2.5% of span minimum, 100% maximum
Accuracy:	1% FS with constant dielectric
Enclosure:	NEMA 4X or NEMA 7/9 aluminum with corrosion resistant polyester coating
Approvals:	UL and CSA listed hazardous for explosion-proof

Probe Specifications

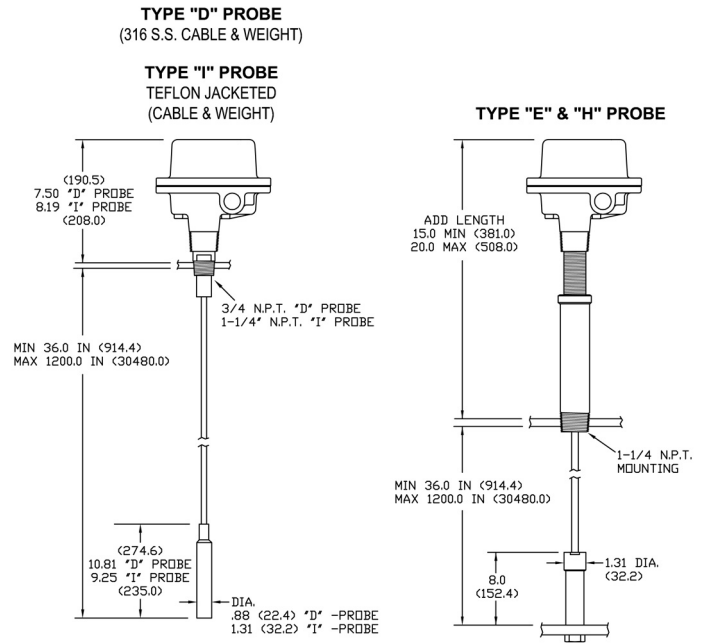
Length:	As specified - types A, B, M, N, P, Q, 167" (4175mm) maximum; types D, E, H, I, 1200" (36000mm)
---------	---

Probe Application

Probe Types A, D, E and P - Non-conductive materials only. Consult factory when mounting in fiberglass or lined vessels.

Probe Type	Mount Standard	Material	Pressure (Maximum)	Temperature (Maximum)
A	3/4" NPT	316 S.S.	50 PSI (3.51 kg/cm ²)	250° F (121° C)
B	3/4" NPT	Teflon®/S.S.	50 PSI (3.51 kg/cm ²)	250° F (121° C)
D	1 1/4" NPT	316 S.S.	Atmospheric	250° F (121° C)
E	1 1/4" NPT	316 S.S.	Atmospheric	250° F (121° C)
H	1 1/4" NPT	Teflon®/S.S.	Atmospheric	250° F (121° C)
I	1 1/4" NPT	Teflon®/S.S.	50 PSI (3.51 kg/cm ²)	250° F (121° C)
M	3/4" NPT	PVC/S.S.	50 PSI (3.51 kg/cm ²)	140° F (60° C)
N	1" Sanitary	Teflon®/S.S.	50 PSI (3.51 kg/cm ²)	250° F (121° C)
P	1" Sanitary	316 S.S.	50 PSI (3.51 kg/cm ²)	250° F (121° C)
Q	2" Sanitary	Teflon®/S.S.	50 PSI (3.51 kg/cm ²)	250° F (121° C)

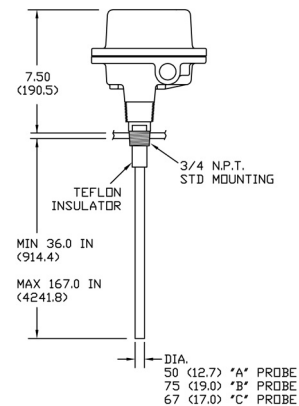
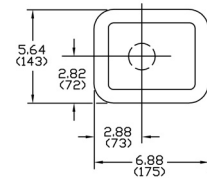
Dimensions



NOTE: CABLE TYPES 3/16" BARE S.S. & 3/16" X 1/4" TEFLON COATED S.S.

TYPE "A", "B" & "M" PROBE

(DIM'S ON COVER SAME FOR ALL CAP LEVELS)



150 Venture Boulevard · Spartanburg, SC 29306
 Tel: (800) 778-9242 · (864) 574-8060
 Fax: (864) 574-8063 E-mail: sales@bindicator.com
 www.bindicator.com