

# MODEL "A" BIN-DICATOR®

for External Mounting on Side of Bin Only  
With Explosionproof Micro Switch

## Installation and Operation Sheet

**IMPORTANT -- READ ALL INSTRUCTIONS BEFORE INSTALLING THE BIN-DICATOR® CONTROL EQUIPPED WITH AN EXPLOSIONPROOF MICRO SWITCH**

### LOCATION

The Bin-Dicator® control must be located at a point where the material in its normal flow will reach and move the diaphragm; and when receding, will completely clear the diaphragm.

### MOUNTING SURFACE PREPARATION

1. Lay out two concentric circles on bin wall at point where the Bin-Dicator® control is to be mounted; one circle to be 8" diameter; the other circle to be 9 3/8" diameter.

2. Cut out the 8" diameter circle, and remove rough edges to avoid cutting the diaphragm.

3. Lay out six equally-spaced holes on the 9 3/8" diameter bolt circle. Drill or tap for 1/4" bolts or cap screws.

**IMPORTANT: For all angles of mounting line C-D must be in a vertical plane. Line A-B must always be horizontal**

### MOUNTING OF UNIT

1. Insert one gasket between bin wall and flange of unit; and fasten Bin-Dicator® control to the bin wall with 1/4" bolts or cap screws.

2. Check operation of the lever system and switch; make field adjustments as outlined on page 3 of this sheet.

3. Connect conduit and make wiring connections at switch terminals.

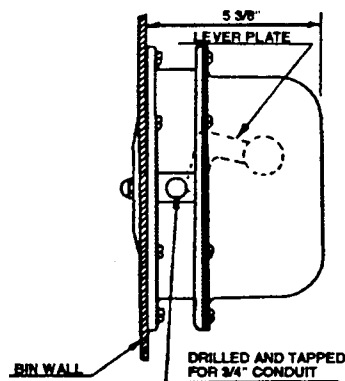
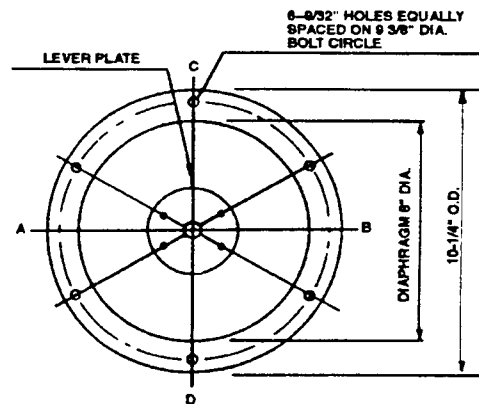
3. Fasten cover to the housing securely inserting second gasket between frame and cover.



## WARNING

**This control must be mounted on the outside of the bin or silo only (as shown above) !**

**Also, in hazardous locations, a seal fitting must be located within 18" of the control.**



### ALTERNATE MOUNTING

1. If the Bin-Dicator® control is to be used for an application where the material to be sensed is of very light density or if the unit is to be mounted on the underslope the counter weight must be reduced to provide sensitive operation of the control.

2. If the material is of heavier density or if the unit is mounted on the underslope, the counterweight must be increased to return the diaphragm to normal as the material clears the diaphragm.

If unusual conditions exist and if you are doubtful as to whether the Bin-Dicator® control can be adapted to these conditions, please contact your local distributor or the factory for assistance.

## PREVENTATIVE MAINTENANCE

The Bin-Dicator® control is designed to provide many years of service-free life while used in normal applications. Semi-annual or annual inspection of the diaphragm, vent and switch circuit is recommended. Notes made during each inspection will provide the basis for a good preventative maintenance program based on your actual usage.

## GUARANTEE

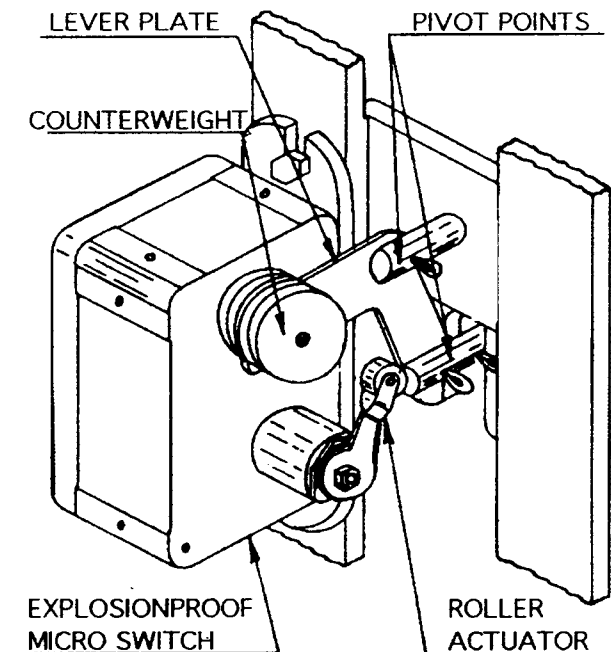
The Bin-Dicator® control is guaranteed against defective materials, workmanship, and products or parts not conforming to standard specifications will be corrected or replaced; provided that notice of such defects is given within 1 year from date of shipment.

### FIELD ADJUSTMENT

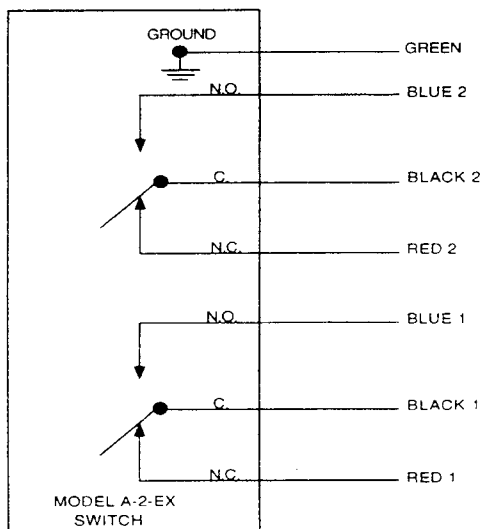
Each Bin-Dicator® control furnished has been adjusted to standard sensitivity at the factory. However, it is advisable to check the following in order to insure reliable operation of the control.

1. Check for binding at the pivot points (shown on the drawing at left). If binding is occurring it is probably due to improper mounting of the unit. Check to be sure the lever plate is in a vertical plane and that the mechanism operates freely.
2. Check switch sensitivity. Switch may be adjusted for more sensitive operation by loosening the locknut on the roller actuator and adjusting the arm to the desired sensitivity or by following the directions under ALTERNATE MOUNTING.

NOTE: When making any adjustment be sure the switch returns to normal when the lever plate is slowly lowered by hand.



### Wiring Diagram of an Explosionproof Double Switch. Model "A-2-EX" BIN-DICATOR®



ALL LEADS NO. 14 AWG  
APPROXIMATELY 24" LONG

### AGENCY APPROVALS

Underwriters' Laboratories and Canadian Standards Association list the MICRO SWITCH EX as an explosionproof switch for use in hazardous atmospheres. Class I, Division I, Groups C and D; and Class II, Division I, Groups E, F and G.

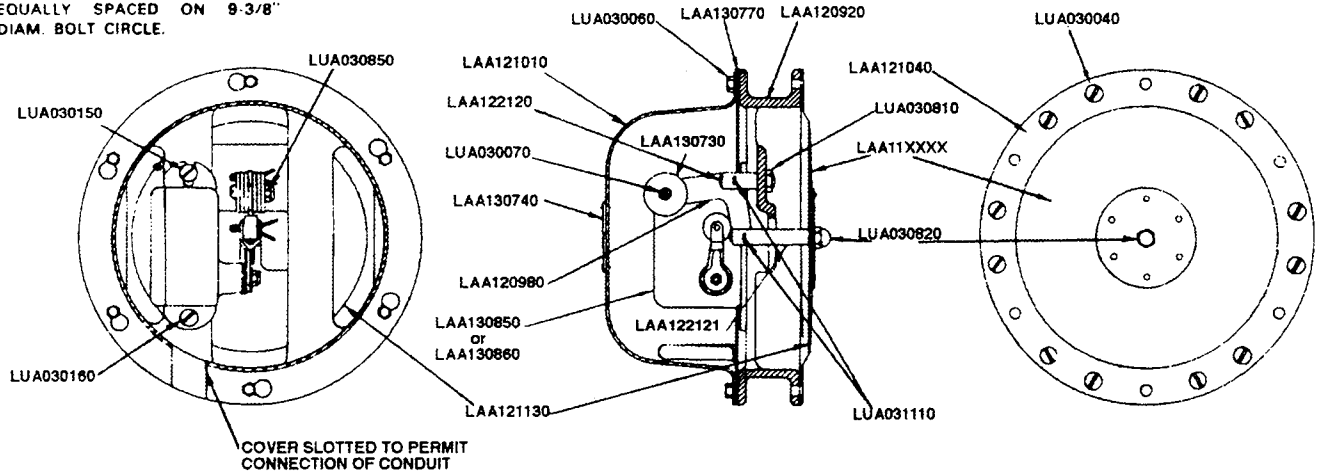
This includes vapors of ethyl ether, gasoline, petroleum, alcohol, acetone, lacquer solvent, natural gas and atmospheres charged with grain dust, carbon black, coal or coke dust, and atmospheres containing metal dust, including aluminum, magnesium, and their commercial alloys.

### MICRO SWITCH RATINGS

Single-pole, double throw explosionproof MICRO SWITCH EX. AC rating is: 15 amp at 125 volts, 250 volts, and 480 volts. DC rating is: 1/2 amp at 125 volts, 1/4 amp at 250 volts.

## DIAGRAM OF EXPLOSIONPROOF BIN-DICATOR®

NOTE HOLES MARKED "M" 9/32" DIA-  
METER 6 MOUNTING HOLES  
EQUALLY SPACED ON 9-3/8"  
DIAM. BOLT CIRCLE.



### PARTS LIST

PART NO	DESCRIPTION	QTY REQ'D	PART NO	DESCRIPTION	QTY REQ'D
LAA11XXXX	Diaphragm - Specify	1	LAA13XXXX	Explosionproof Micro Switch & Bracket - Specify	1
LAA120920	Frame	1	LUA030030	10-24 x 3/8" F. H. Mach. Screw	12
LAA120980	Lever Plate	1	LUA030060	1/4" - 20 x 3/8" Hex H.D. Mach. Screw	6
LAA121010	ABS Plastic Cover	1	LUA030070	12 - 24 x Variable R.H. BR. Mach. Screw	1
LAA121040	Washer	1	LUA030150	1/4" - 20 x 1/2" R.H. Mach Screw	1
LAA121130	Diaphragm Back Plate	1	LUA030160	1/4" - 20 x 1/2" F. H. Mach Screw	1
LAA122120	Pivot Rod	1	LUA030810	5/16" - 18S, F, HEX, BR, Reg, Nut	1
LAA122121	Push Rod	1	LUA030820	5/16" - 18 HEX. BR. Cap Nut	1
LAA130730	Variable Counterweight	1 set	LUA030850	12 - 24 HEX. Stop Nut	1
LAA130740	Name Plate	1	LUA031110	3/32" x 1" Spring BR. Cotter Pin	2
LAA130770	Gasket	2			

For information, specification, and engineering assistance  
with any BINDICATOR® product...

Contact your local  
distributor/representative  
or  
the factory.

## ***Level and Material Handling Instrumentation & Controls***

### ***Electro-Mechanical Point Level Controls***

Roto-Bin-Dicator®  
Super-Safe Roto-Bin-Dicator®  
Mini-Roto-Bin-Dicator®  
Model A Bin-Dicator®  
Auto Bin-Dicator®  
Bantam Bin-Dicator®  
Liquid Level Bin-Dicator®  
Pulse Point™

### ***RF Capacitance Point Level Controls***

RF-6000  
RF-8000  
RF-8200  
RF-9000  
RF-9100  
RF-9200  
RF-10000  
RF-11000  
RF-12000

### ***Continuous Level Controls***

GP Yo-Yo®  
GP II Yo-Yo®  
Mark III Yo-Yo®  
Cap-Level® II  
Cap-Level® IIA  
BOSS® II  
AR-1000™  
Phase Tracking™

### ***Material Handling***

Bin-Flo®  
Flo-Guard™

### ***Ultrasonic Level Monitor***

Micro-Sonic™

### ***GENELCO Liquid Level Controls***

Mach One™  
Leveldata™  
Eagle®  
Tracker®

# **BINDICATOR®**

LEVEL INSTRUMENTATION

**ISO 9001 Registered Company**

150 Venture Boulevard • Spartanburg, SC 29306  
Phone: (864) 574-8960, Fax: (864) 578-7308  
Customer Service: (800) 778-9242  
Internet: <http://www.bindicator.com>  
email: [sales@bindicator.com](mailto:sales@bindicator.com)